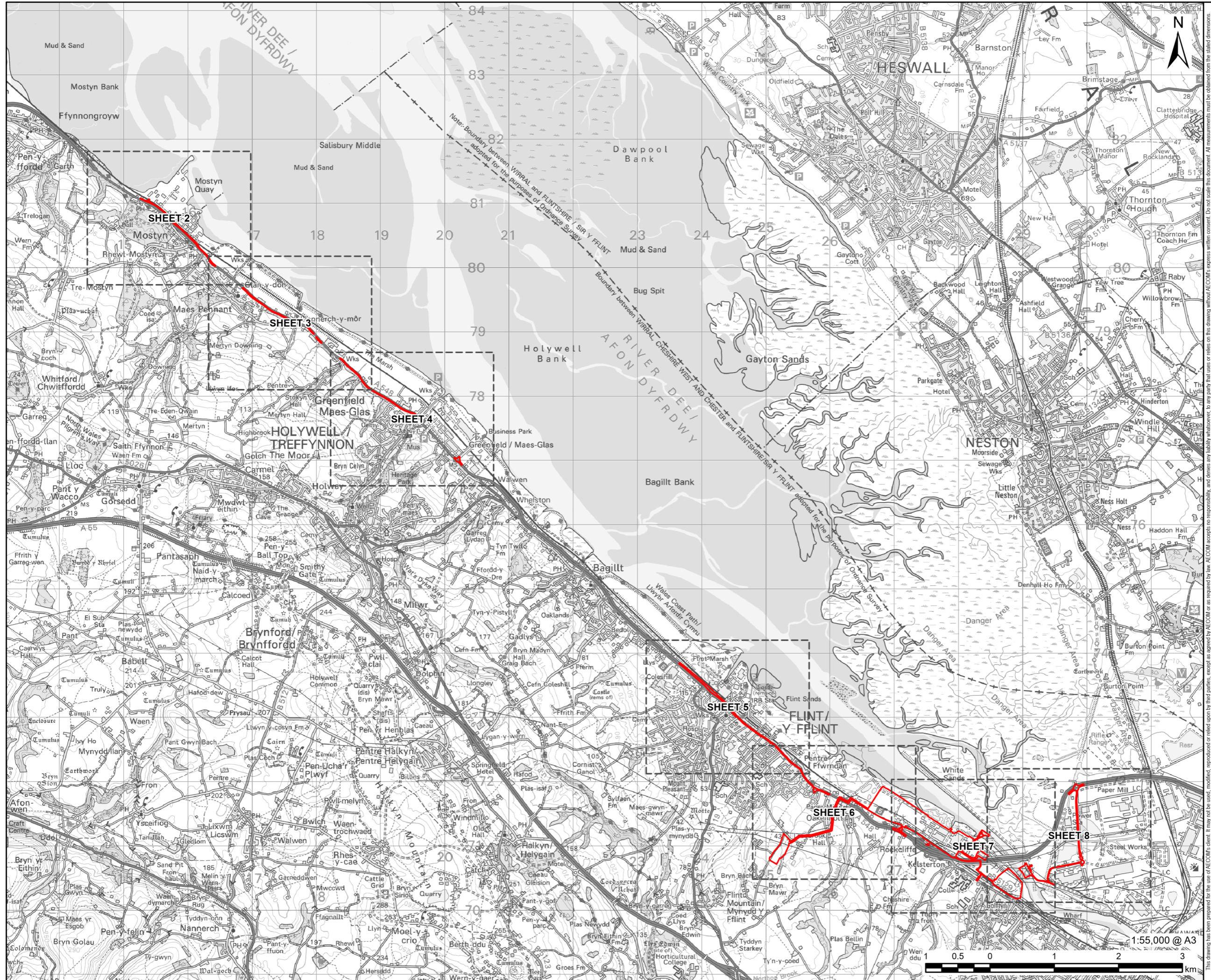


Connah's Quay Low Carbon Power

Environmental Statement Volume III Figure 3-3: Areas Described in the ES

Planning Inspectorate Reference: EN010166
Document Reference: EN010166/APP/6.3
Planning Act 2008 (as amended)
Infrastructure Planning (Applications: Prescribed Forms and Procedure) Regulations
2009 - Regulation 5(2)(a)
Revision 02

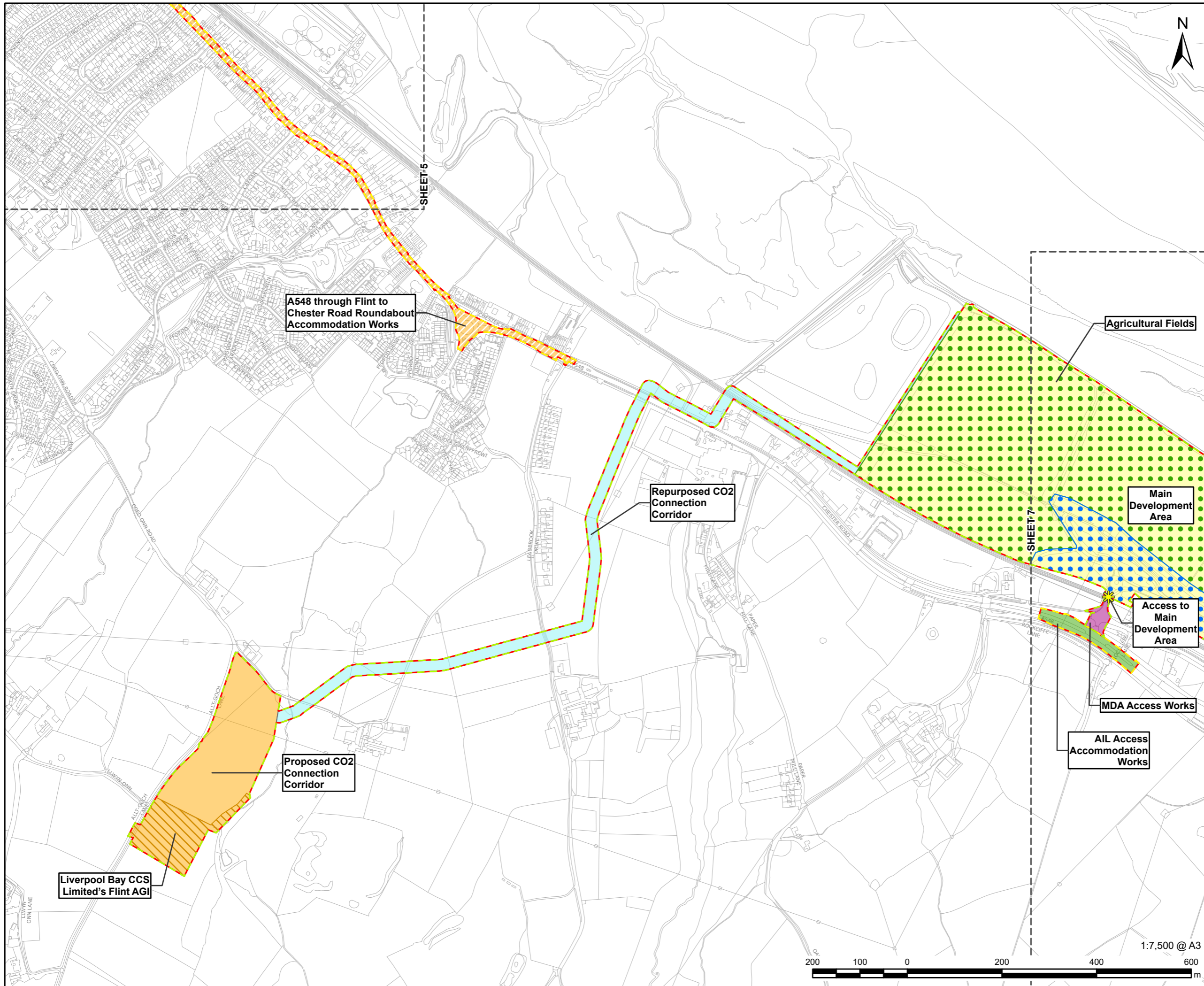
March 2026



This drawing has been prepared for the use of AECOM's client. It may not be used, modified, reproduced or relied upon by third parties, except as signed by AECOM or as required by law. AECOM accepts no responsibility, and denies any liability whatsoever, to any party that uses or relies on this drawing without AECOM's express written consent. Do not scale this document. All measurements must be obtained from the stated dimensions.

LEGEND

- Order limits
- Accommodation Work Area
- Construction & Operational Area
- Access to Main Development Area
- Main Development Area
- Repurposed CO₂ Connection Corridor
- Proposed CO₂ Connection Corridor
- MDA (Main Development Area) Access Works
- AIL (Abnormal and Indivisible Loads) Access Accommodation Works
- Liverpool Bay CCS Limited's Flint AGI
- A548 through Flint to Chester Road Roundabout Accommodation Works
- Agricultural Fields
- HV Overhead Line Corridor



This drawing has been prepared for the use of AECOM's client. It may not be used, modified, reproduced or relied upon by third parties, except as signed by AECOM or as required by law. AECOM accepts no responsibility, and denies any liability whatsoever, to any party that uses or relies on this drawing without AECOM's express written consent. Do not scale this document. All measurements must be obtained from the stated dimensions.

NOTES
© Crown Copyright 2025. All rights reserved.
Ordnance Survey Licence AC0000808122.

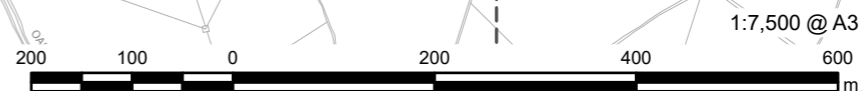
ISSUE PURPOSE
Environmental Statement

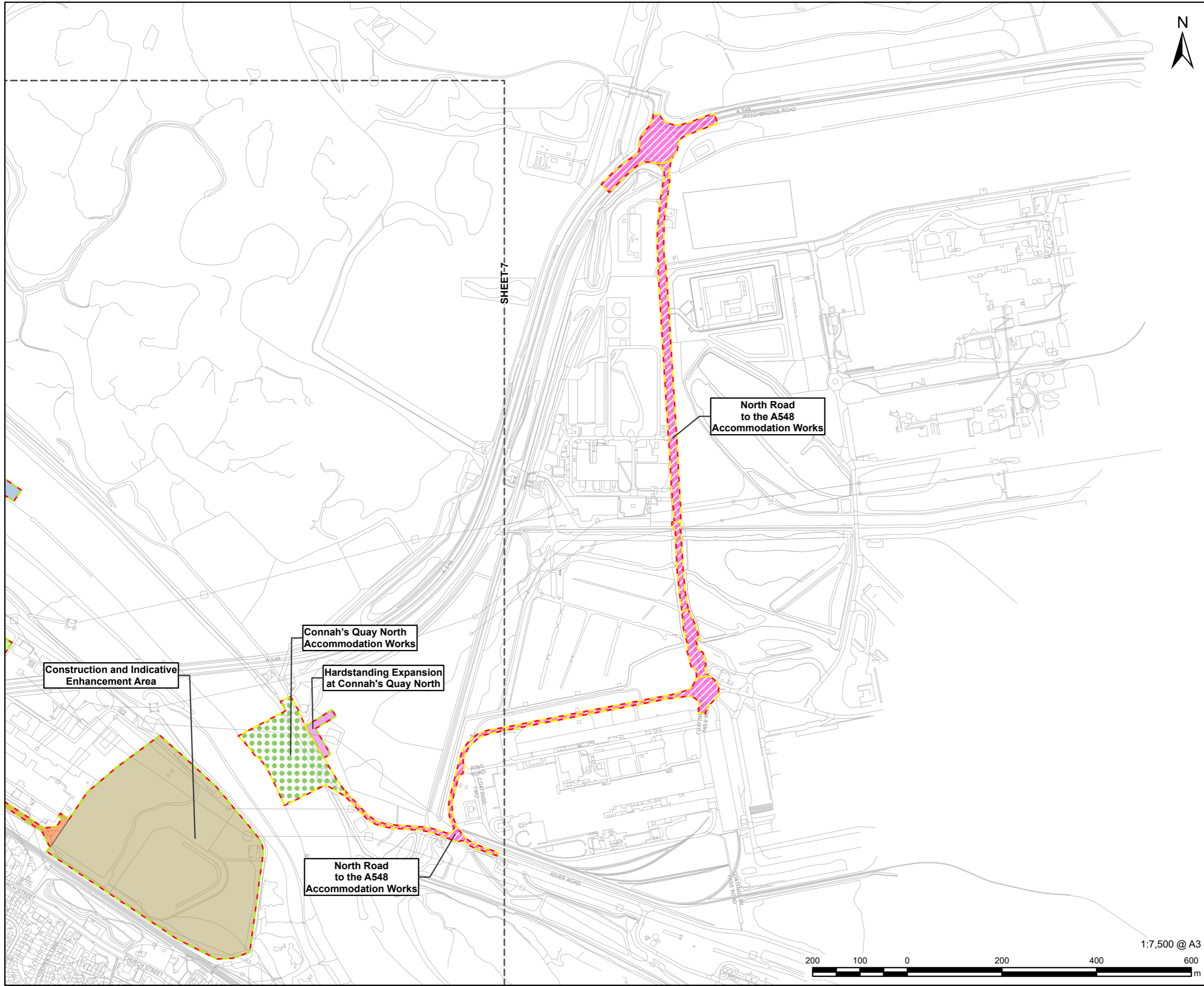
DATE
March 2026

PROJECT NUMBER
60768754

FIGURE TITLE
Areas Described in the Environmental Statement
Sheet 6 of 8

FIGURE NUMBER
Figure 3-3





LEGEND

- Order limits
- Accommodation Work Area
- Construction & Operational Area
- Water Connection Corridor
- Electrical Connection Corridor
- Access to Construction & Indicative Enhancement Area
- Construction & Indicative Enhancement Area
- Connah's Quay North Accommodation Works
- Hardstanding Expansion at Connah's Quay North
- North Road to the A548 Accommodation Works

NOTES

© Crown Copyright 2025. All rights reserved.
 Ordnance Survey Licence AC0000808122.

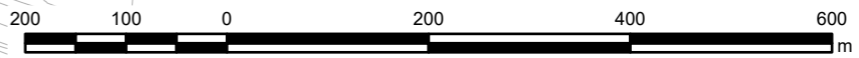
ISSUE PURPOSE
 Environmental Statement

DATE
 March 2026

PROJECT NUMBER
 60768754

FIGURE TITLE
 Areas Described in the Environmental Statement
 Sheet 8 of 8

FIGURE NUMBER
 Figure 3-3



This drawing has been prepared for the use of AECOM's client. It may not be used, modified, reproduced or relied upon by third parties, except as agreed by AECOM or as required by law. AECOM accepts no responsibility, and denies any liability whatsoever, to any party that uses or relies on this drawing without AECOM's express written consent. Do not scale this document. All measurements must be obtained from the stated dimensions.